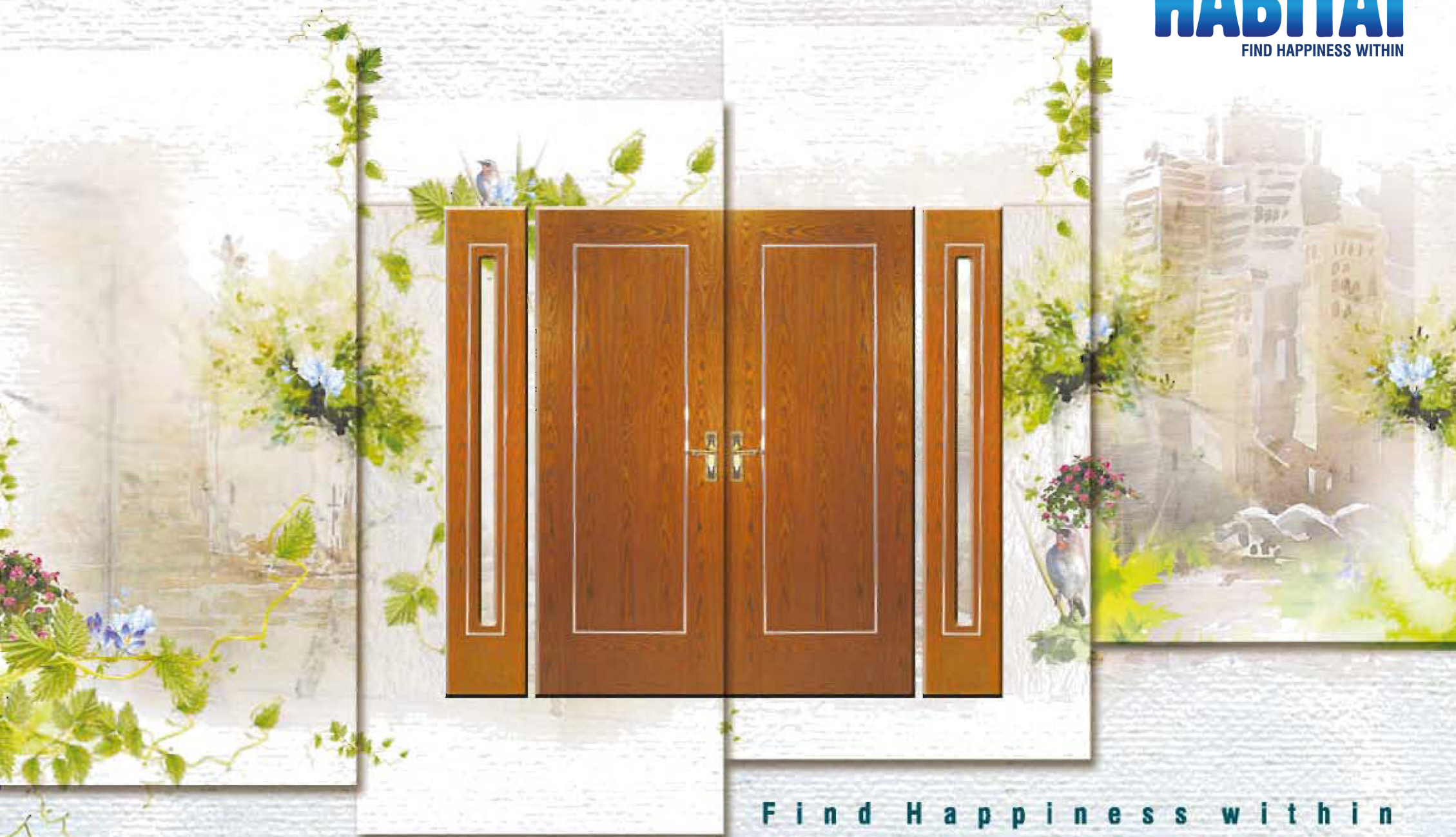


PRUDENT  
**HABITAT**  
FIND HAPPINESS WITHIN



F i n d H a p p i n e s s w i t h i n











Every creature big and small has its own place in the grand scheme of things. The place where we are comfortable in being who we are, where we fit in perfectly is the space designated to us...

Fill up your senses with the fragrance of beauty and experience the charm of joyful living.  
Come dwell at the natural hub of homeliness – Prudent Habitat.

Located on Christopher Road, Prudent Habitat offers you 21 beautiful apartments artistically sculpted and engineered to perfection. If you want to experience the blend of simplicity and style, turn the pages to explore its perfect essence....









## Coating of security

Your safety and peace of mind is of utmost importance for us, it helps you to grow and function. To give you a secured state of mind at all times we have chosen the best quality door and window fittings. Now leave your tensions behind every time you step out of home.

- Door Frame – Made of treated wood/UPVC
- Main Door – Decorative wooden flush/panel door
- Main Door Fittings – Godrej or equivalent make night latch with eyepiece & handle
- Internal Bedroom Doors – Polished Flush door with lock
- Toilet Doors – Laminated inside & polished outside
- Windows – Anodized/powder coated aluminium/UPVC windows with glass panes
- Integrated Windows MS Grill \*\*

\*\*Mandatory at extra cost

## Picture perfect

We aim to make your living picture perfect and that is why we have kept provisions for all necessary electrical fittings at every nook and corner of your home.

- Modular switches of reputed brands
- AC points in all bedrooms, drawing & dining room with branded copper wiring
- Necessary electric points with switches in all bedrooms, living / dining , kitchen & toilets
- Cable TV conduiting in living / dining & master bedroom
- Telephone line in living / dining
- Concealed copper wiring with Central MCB of reputed brands
- Doorbell point at the main entrance door





## Unveiling magnificence

As you step in the spacious apartments, you will be greeted with a spectacular living area. Splendid bedrooms and dining space would be waiting to greet you with exuberance. What makes your living experience truly magnificent in Prudent Habitat are the special components that have been used in building it.

- Modern Aesthetic Elevation
- Earthquake Resistant RCC framed structure with anti-termite treatment
- Wall finish Interior – Brickwork with Plaster of Paris
- Wall finish Exterior – High quality weatherproof cement/textured paint/tile cladding as required
- Bedroom Flooring – Vitrified tiles
- Living and Dining Flooring – Vitrified tiles



## Complementing your living

To complement your lifestyle, we have impeccably chosen every detail that goes into making the common areas of Prudent Habitat. Be it the spacious lobby, the modern elevators, the common security or intercom facilities, we assure you cent percent satisfaction. Reclaim delight, reclaim bliss, reclaim your life, as here comes Prudent Habitat.

- Necessary illumination in all lobbies, staircases & common areas
- Two automatic Lifts
- Stairs & Floor Lobbies - Kota Stone / Tiles / Marble
- Entrance - Ground floor lobby of marble/ granite/ tiles.
- Surveillance facility with CCTV in ground floor lobby
- Intercom facility in all flats
- Modern firefighting system
- Generator Back up (2BHK - 1000 Watts and 3BHK - 1500 Watts)\*\*





## Unveiling magnificence

As you step in the spacious apartments, you will be greeted with a spectacular living area. Splendid bedrooms and dining space would be waiting to greet you with exuberance. What makes your living experience truly magnificent in Prudent Habitat are the special components that have been used in building it.



- Modern Aesthetic Elevation
- Earthquake Resistant RCC framed structure with anti-termite treatment
- Wall finish Interior – Brickwork with Plaster of Paris
- Wall finish Exterior – High quality weatherproof cement/textured paint/tile cladding as required
- Bedroom Flooring – Vitrified tiles
- Living and Dining Flooring – Vitrified tiles

## Complementing your living

To complement your lifestyle, we have impeccably chosen every detail that goes into making the common areas of Prudent Habitat. Be it the spacious lobby, the modern elevators, the common security or intercom facilities, we assure you cent percent satisfaction. Reclaim delight, reclaim bliss, reclaim your life, as here comes Prudent Habitat.



- Necessary illumination in all lobbies, staircases & common areas
- Two automatic Lifts
- Stairs & Floor Lobbies - Kota Stone / Tiles / Marble
- Entrance - Ground floor lobby of marble/ granite/ tiles.
- Surveillance facility with CCTV in ground floor lobby
- Intercom facility in all flats
- Modern firefighting system
- Generator Back up (2BHK - 1000 Watts and 3BHK - 1500 Watts)\*\*







## Tranquil, Bliss and Joy

Have you smelled the fresh morning air mixed with the smell of the early blooms? Experience the birds chirping and colorful butterflies greeting you every morning at the roof top garden. Set your spirits free as you breathe in the pure oxygen filled air. Reconnect with your soul and re-energise your body every time you meditate in this heavenly ambience.







## Peace ensured

Keeping in mind your every need and requirement, we have allotted considerable ground floor car parking space for your treasured automobile's safety. Each flat has been given a minimum of one car parking space. After each happy trip with your loved ones, when you come back home, your car is secured and peace of mind ensured.







## Elevating your lifestyle

Habitat brings to you the fusion of the finest infrastructures and the comfort of the best amenities. Keeping your convenience in mind the building has been equipped with two automatic elevators and DG\* power back up. We have also made provision of separate staff toilets and for your 24X7 security, surveillance cameras have been installed. Lifestyle redefined!

\*At extra cost





## Mummy's pride

Mummy's food makes home always more special to live in. To make mummy's cooking experience always pleasant, we have specially designed the kitchen to befit all the modern electrical equipments she would need in hand.



- Flooring – Vitrified tiles/Marble
- Granite counter
- Stainless steel sink
- Dado of ceramic tiles upto 2 feet above the counter
- Electrical points for Refrigerator, Aquaguard, Exhaust fan & Microwave Oven





## Refresh your senses

Comfort and luxury goes hand in hand as you inch your way into the bathrooms complementing the larger than life apartments. Rejuvenate your senses and refresh your spirits every time you take a shower. The bathroom fittings have been specially selected to give you the maximum possible pleasure.



- Flooring – Ceramic tiles
- Toilet Walls – Ceramic tiles upto door height
- Sanitary ware of Parryware / Hindware or equivalent make
- CP fittings of ESS ESS / Jaquar or Equivalent make
- Electrical Point for Geyser & Exhaust Fan
- Plumbing provision for Hot / Cold Water line in all bathrooms





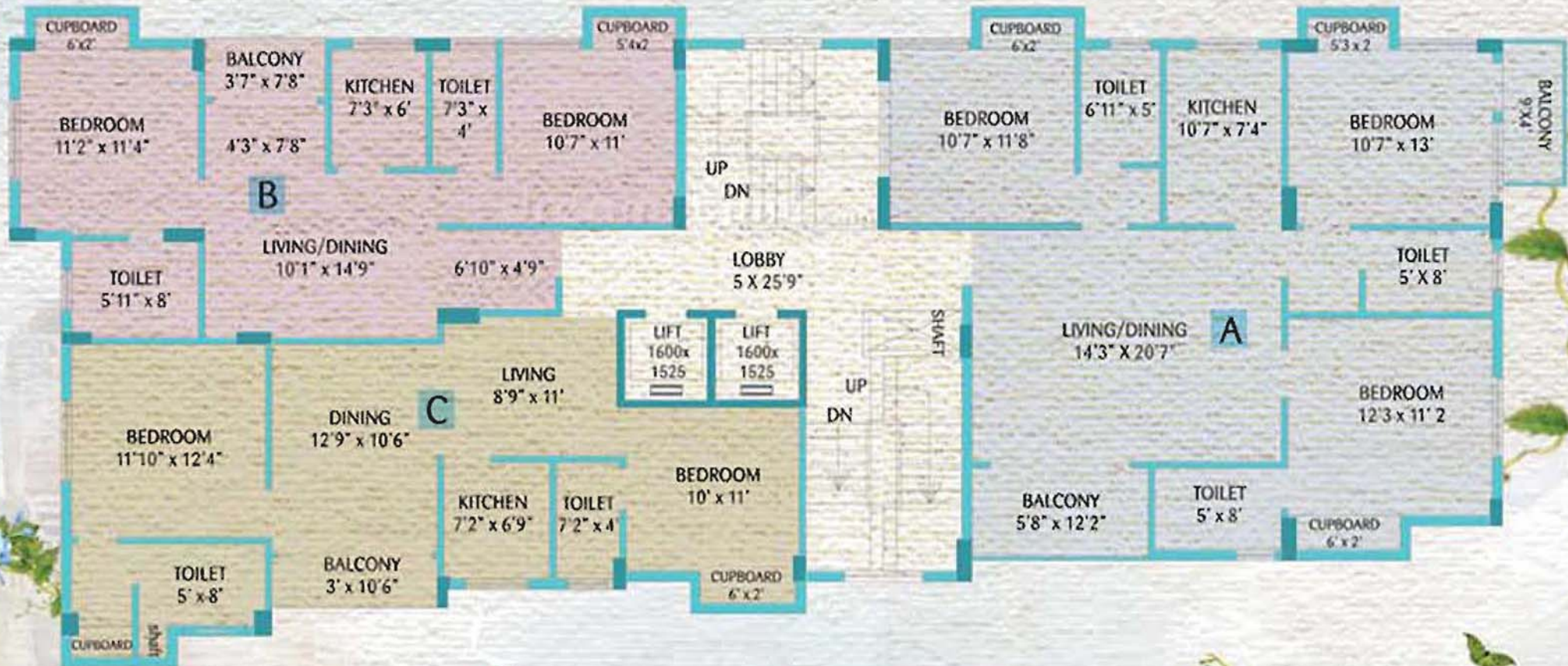
## Ground Floor Plan



**CHRISTOPHER ROAD**



## Typical Floor Plan (1st-7th floor)



FLAT	BHK	SBU area
A	3	1631
B	2	990
C	2	1043



For further details & booking contact

[www.pioneerproperty.in](http://www.pioneerproperty.in)



Express Tower 4<sup>th</sup> Floor  
42A, Shakespeare Sarani Kolkata 700 017  
☎ + 91 98368 11111 / 📞 +91 33 40024002  
✉ [sales@pioneerproperty.in](mailto:sales@pioneerproperty.in)